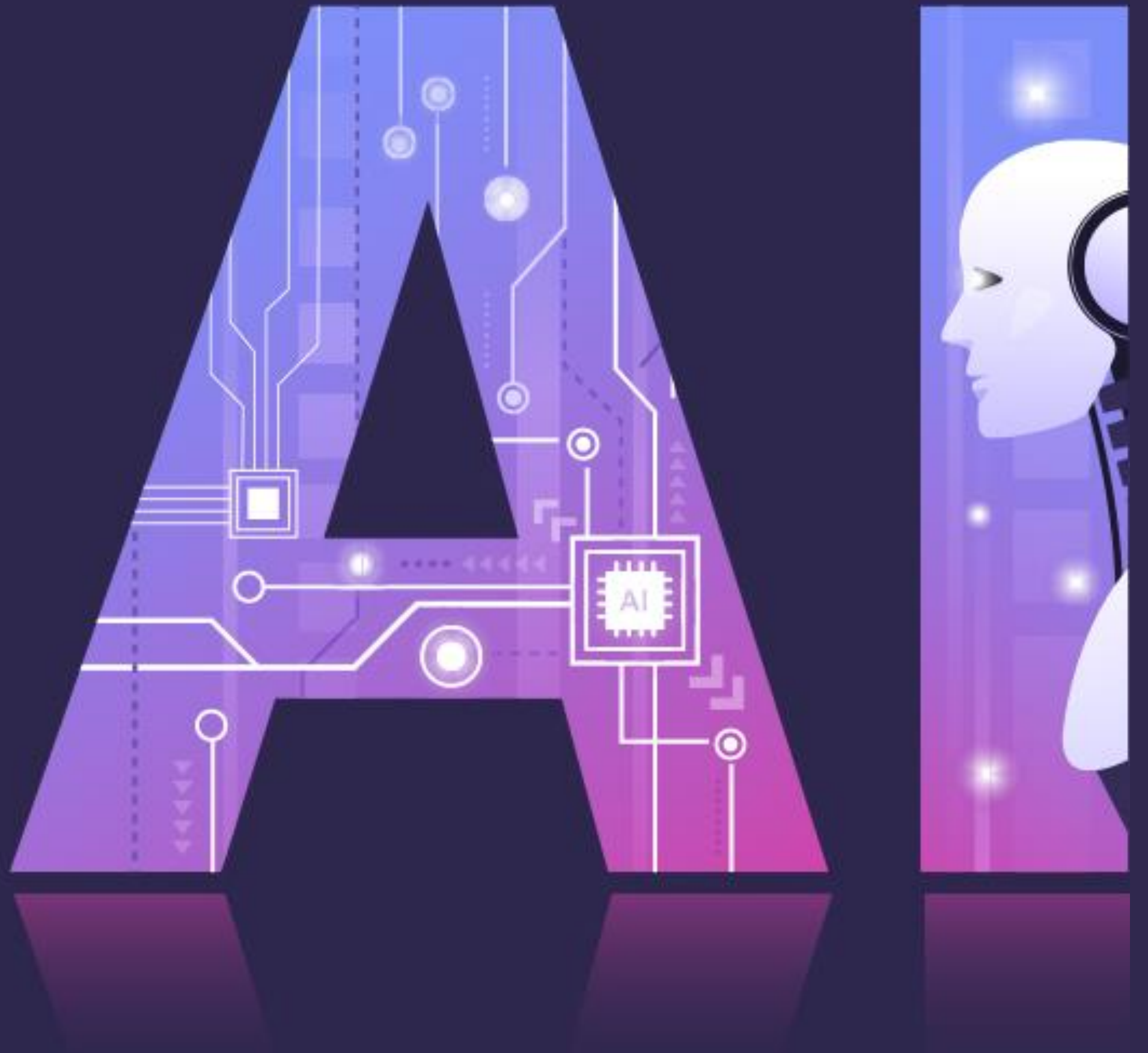
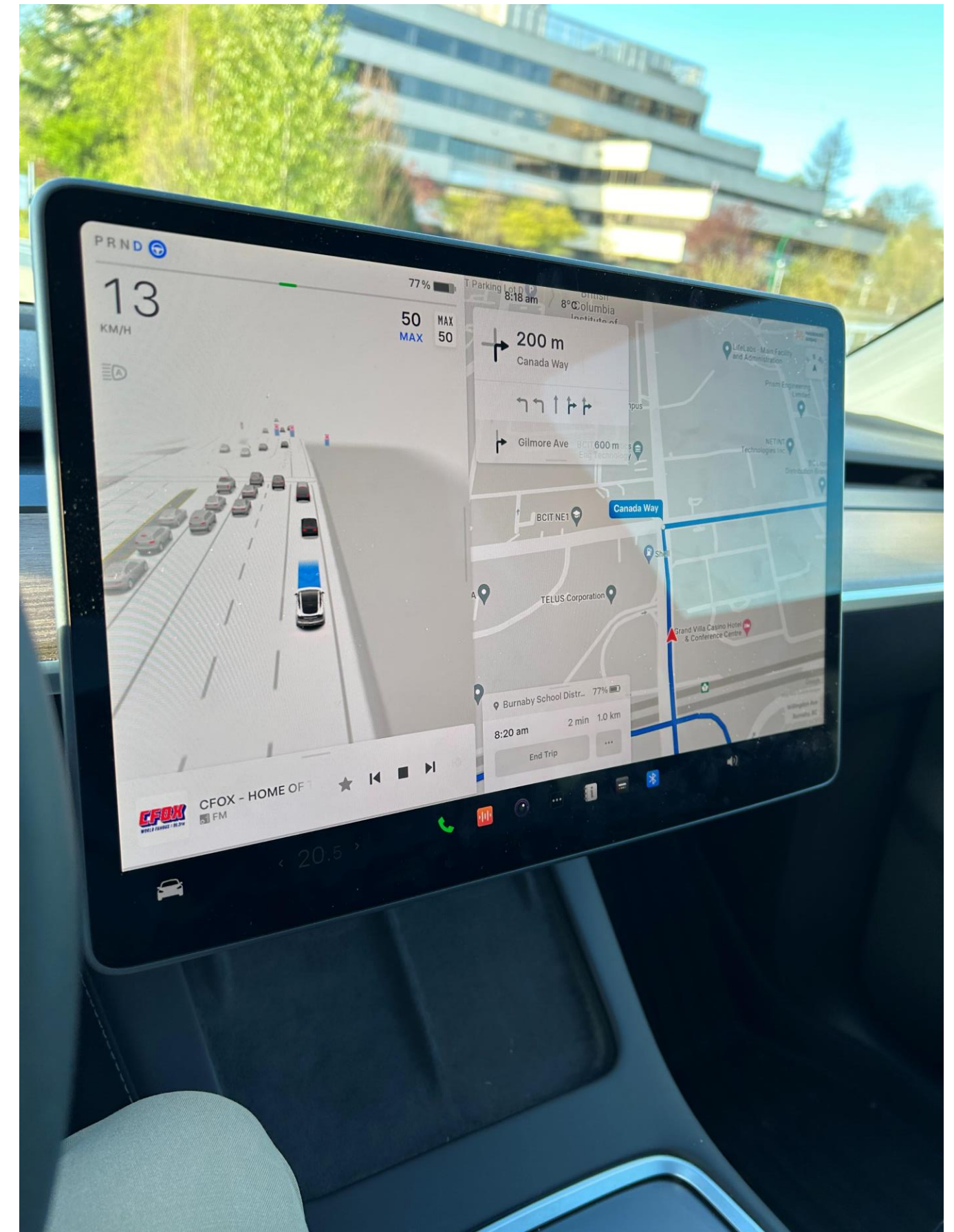


BURNABY SCHOOLS GUIDELINES FOR THE USE OF AI in EDUCATION FAMILIES



Data and Patterns

- **Automated Driving**
- **Grocery Store Points Card**
- **Generative Language Models - Including Coding**
- **Economic Disruption - Marketing/Communications - Law**
- **Social Media Algorithms - "The first battle with AI"**



Generative Pre-Trained Transformer

Generative

AI is generating/creating. There are many generative AI programs that generate different products, such as text, images, music etc.

Pre-Trained

The program/model has already been taught on a large dataset, and it has learned how to perform a task before it is fine-tuned for a specific use.

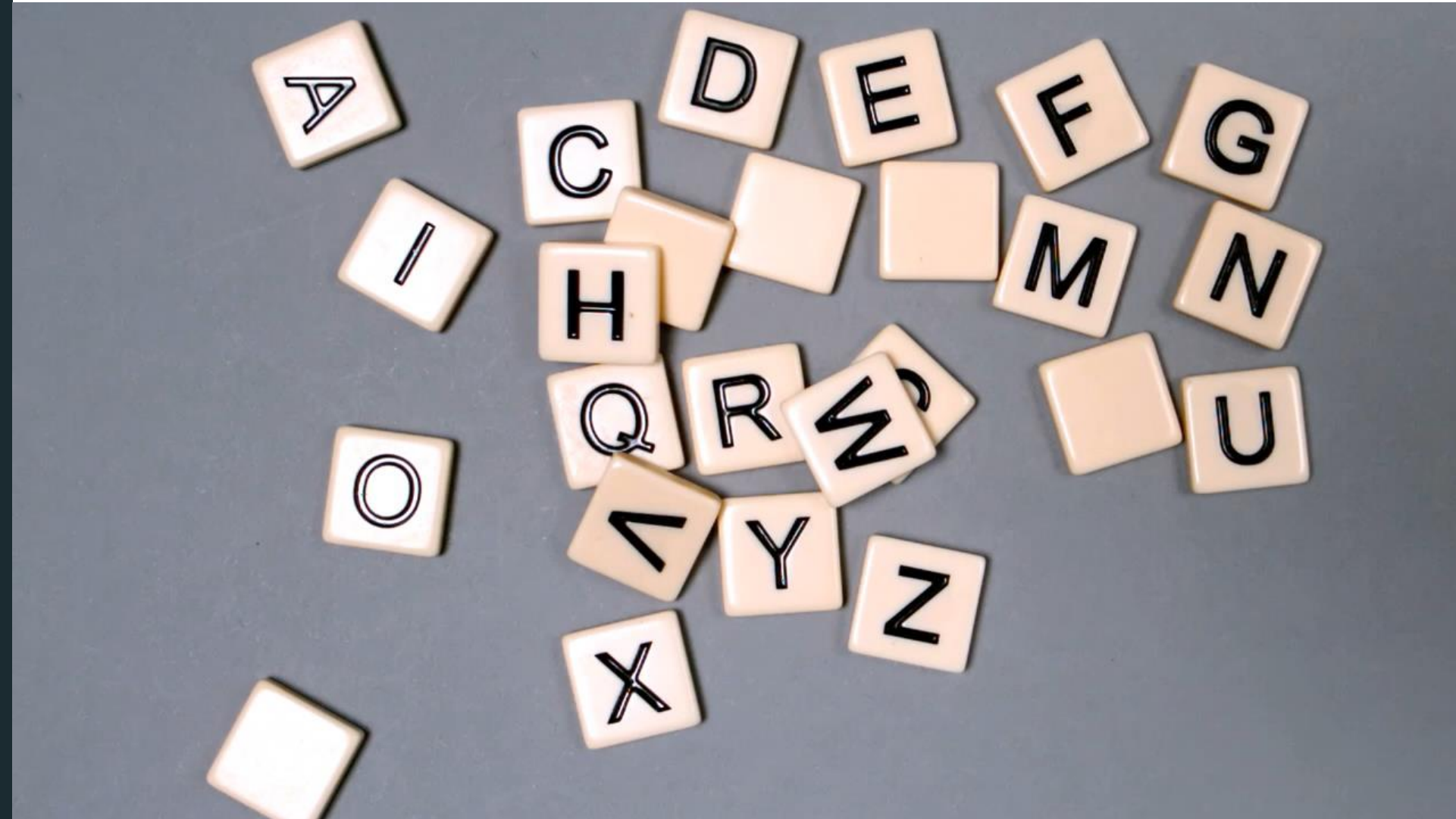
Transformer

In simple terms, it uses a specific AI architecture that can understand and generate humanlike text.

Introducing ChatGPT

ChatGPT is fundamentally trying to produce a “**reasonable continuation**” of whatever text it’s got so far.

It does so in a random fashion



Technology Tool Impacts In Education

Handwriting to Keyboarding

Hand Calculations to Calculators

Encyclopedias to digital resources/internet

Overheads to PowerPoints

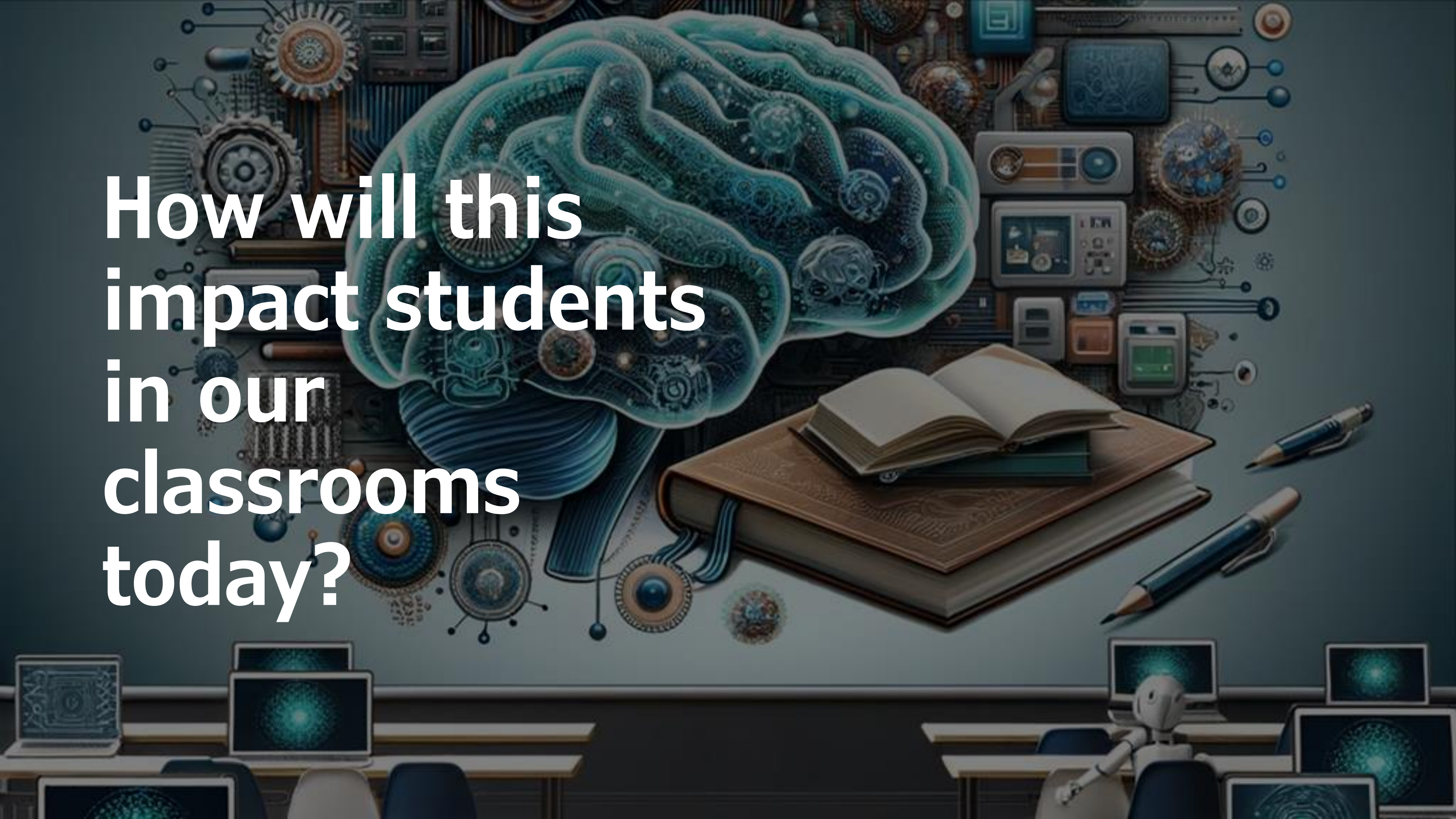
VCRs to Youtube



**What did
we gain?**

**What did
we lose?**

How will this
impact students
in our
classrooms
today?



**What does it mean to be intelligent
or educated in the world with AI?**



Computer multiple choice, PowerPoint presentation, video, graph, essay, short answer questions, journal entry, research paper, poster presentation, debate, role play/simulation, peer review, self-assessment, fill-in-the-blanks, matching, true/false questions, diagram labeling, concept map, case study analysis, reading comprehension, exit ticket, homework assignments, quizzes, final exams, annotated bibliography, book review

How Does This Change Assessment?



Teaching and Learning with AI



**Empower the
educator and
learner,
how does AI?**

When is it a superpower?

You have the Domain of Knowledge

You have clear and precise prompts that generate specifically what you are looking for.

You review and adjust AI results with your professional judgement

You tailor and personalize results for your environment



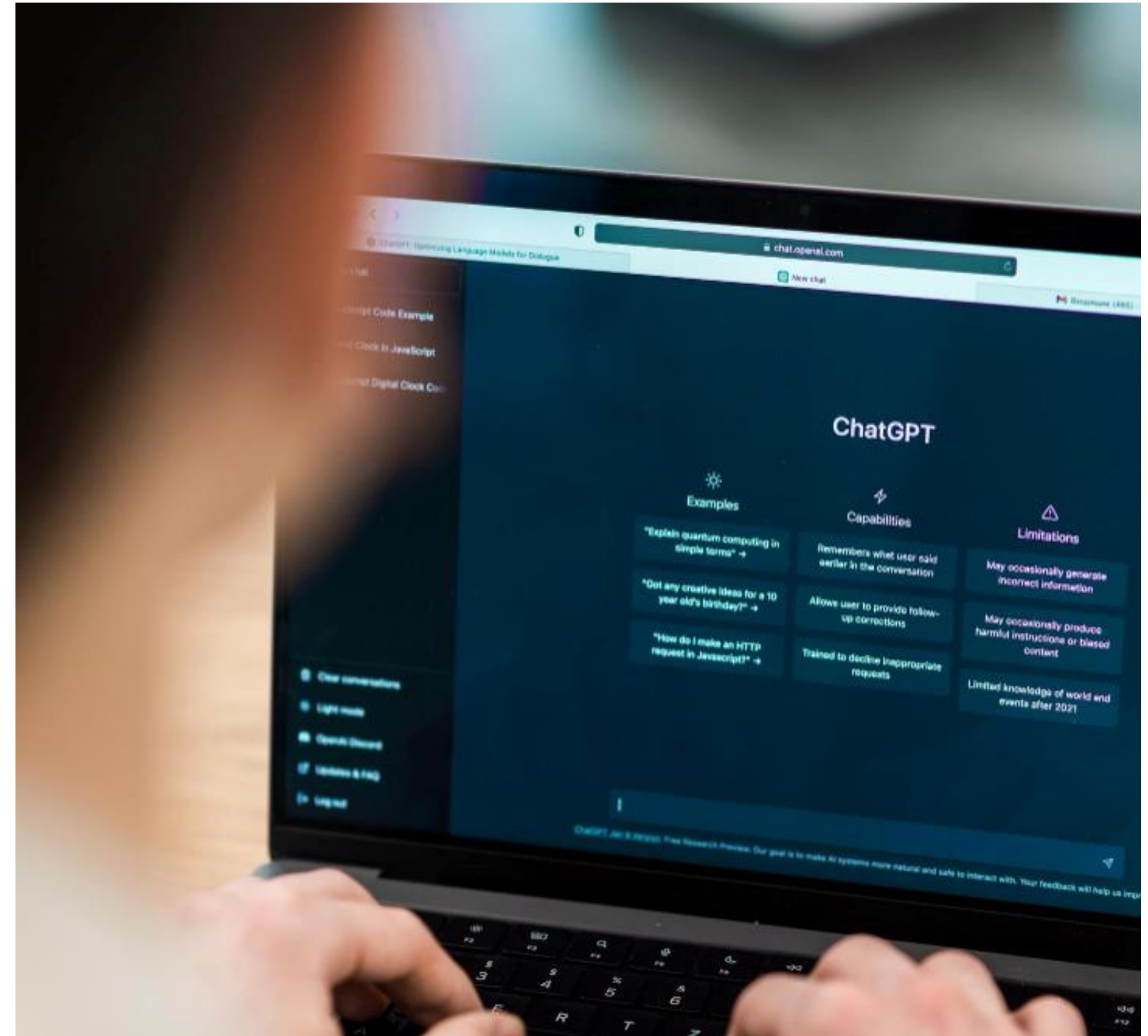
When it is great for learners?

Supports the development of skills and competencies

Provides constructive support for the process of learning

It provides feedback and personalized comments to your work

You rely on your own creativity, critical thinking and personal effort



Student Uses

**Assessment for
learning**

Pallant et al. (2025)

**Target-based
Research**

Nadelson (2025)

Self-Regulation

Chiu (2024)

Problem-posing

Walkington et al. (2025)

“Will Smith Eating Spaghetti” (April 2023)



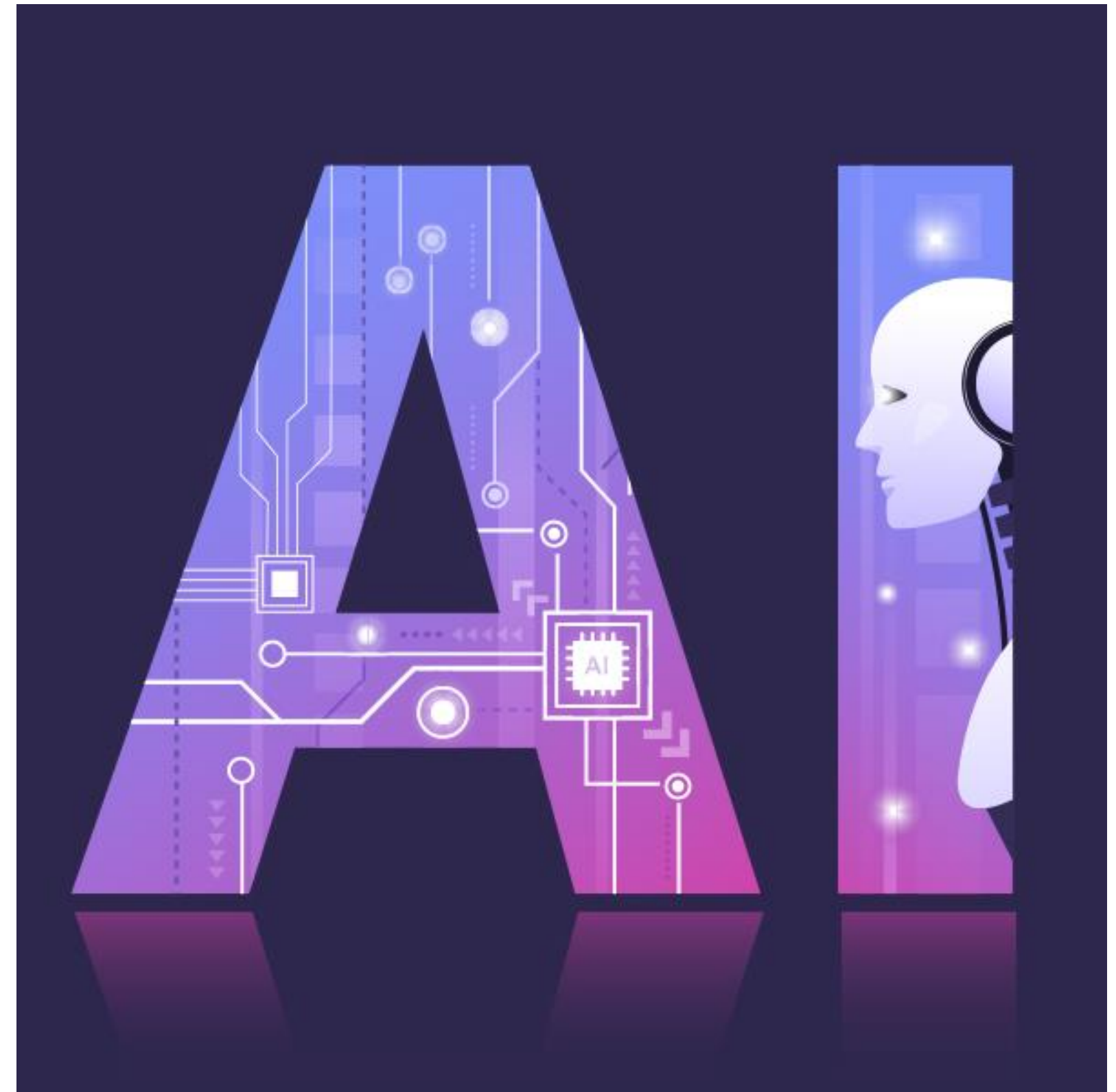
“Will Smith Eating Spaghetti” (January 2025)



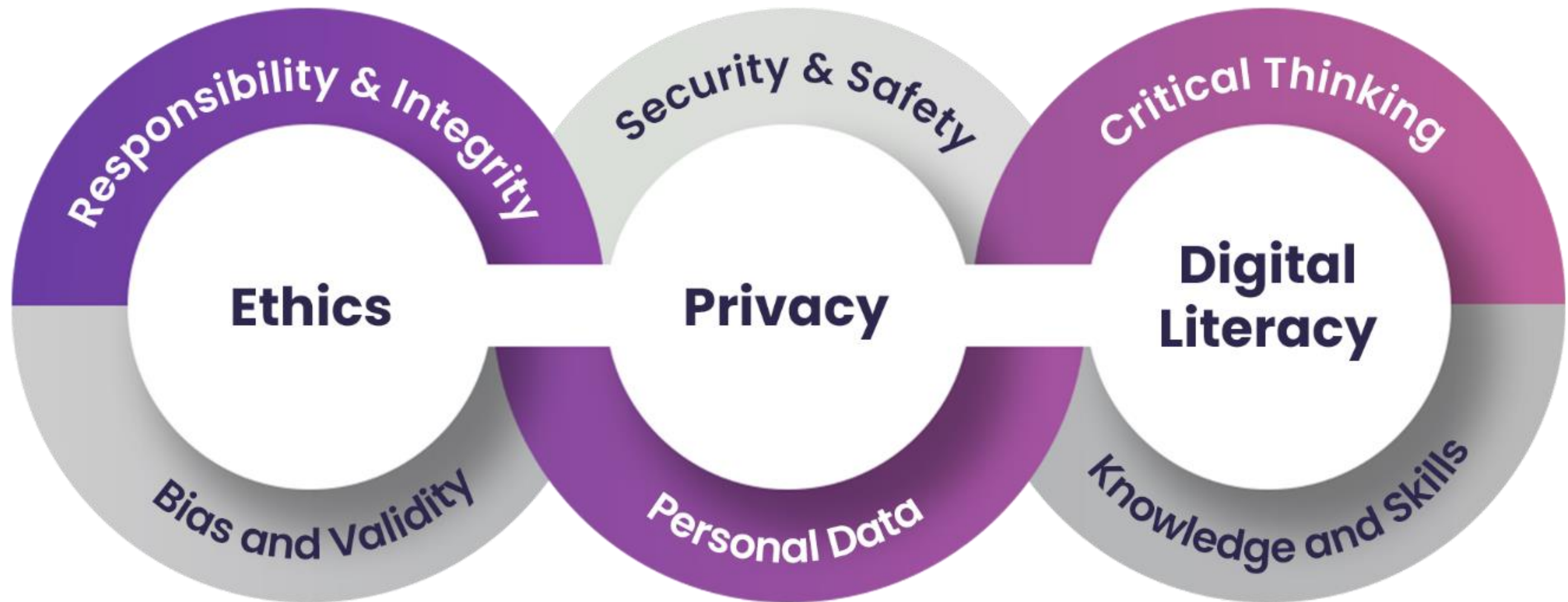
BURNABY SCHOOLS GUIDELINES FOR THE USE OF AI

AI is a powerful tool that can **support learning**, but it should not replace your own **critical thinking**, **creativity**, or **personal effort**.

This guide is designed to help you make good decisions around your use of AI.



BIG IDEAS for the Responsible Use of AI



Digital Literacy Skills

What are the AI Skills Students Need to Develop?

- **Understanding AI as a Tool** - knowing when/how to use AI appropriately
- **Protecting Privacy** – appreciating the value of protecting personal and private information
- **Effective Prompting** – developing the skills to write clear, purposeful prompts to get high-quality responses from AI
- **Critical Evaluation** – knowing how to verify the accuracy, reliability, and appropriateness of AI generated content through critical thinking & fact-checking
- **Transparency & Accountability** – Clearly communicating when and how AI was used



When in doubt, get students to ask themselves

“Is AI helping me learn, or is it doing the learning for me?”

AI Tools

What AI tools should I use?

Enterprise Level



- Enterprise Data Protection (data is not used by Microsoft to train Copilot)
 - Better privacy, control, and safer use of AI
- <https://copilot.cloud.microsoft>
- Login with district Microsoft Account for data protected version

Ed Tech AI Tools



- AI applications designed for educators (MagicSchoolAI, SchoolAI, Diffit, etc.)
- Confirm that tools do not collect/share student data prior to using with students.
- Students should not create accounts - anonymous access through teacher managed tools/dashboards only.
- Use as supports for teaching/learning but not to store student-specific information (grades, IEP data, etc.)

AI Transparency in the Class

WITHOUT USING AI

Learning activities where the development of the knowledge, skills, and competencies would be better developed without the use of AI.

ASSISTED BY AI

Learning activities where AI can support and provide resources that enhance the learning experience.

DEVELOPED WITH AI

Learning activities where AI is used to co-create the artifacts of learning and experiences.

Explicit instruction on when/how it is used.

AI Transparency in the Class

Type of AI Use	Credit Needed?	Example
Fully AI-generated	Yes	AI created the entire text or image.
Partially AI-assisted	Yes	AI helped structure or refine content or generated ideas.
Used for grammar/spelling checks	Optional, but recommended	AI fixed typos but didn't change meaning.
No AI was used	Optional	Work was fully human generated

As AI continues to grow and change, using it responsibly helps us stay curious, creative, and ethical learners.

